




# SHP SERIES 7-30W LED DOWNLIGHT



SHP series is partial recessed which will do well with some structure like . It is anti-glare design and the UGR can be under 17. ---Patent Design!

**Fixed design, no rotatable, anti-glare downlight,**  
Different color of anti-glare shield & housing for option, the lowest UGR can be 15---Patent design!

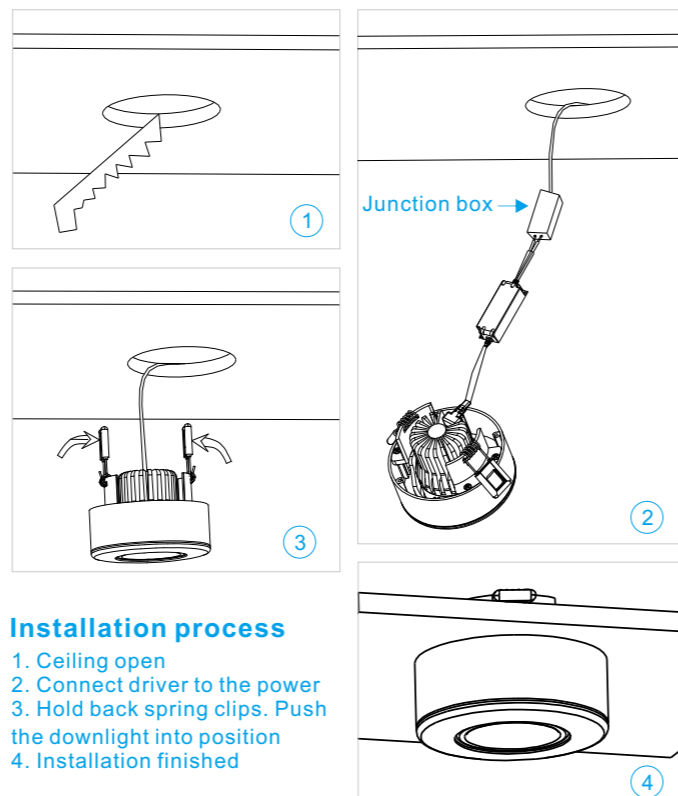
**Support almost all the famous Light source and Driver**  
Perfectly compatible with the same light fixture, same size with different light source and different driver

**Completely free solder assembling**  
Replace any accessories perfectly without any damages, no need soldering tools

**Perfect secondary optical design:**  
Optional beam angle: 8 - 90 deg, can be used for wall washing effect

**High CRI, High lumens, Low decay LED (L-80)**  
Basic characteristic: 150lm/w under CRI>90 & 3000K

**Flicker free driver & 5 years warranty for whole lamp**  
Support Triac dim, 1-10V dim, DALI dim, DMX dim, 2.4G dim, warm dim, etc.



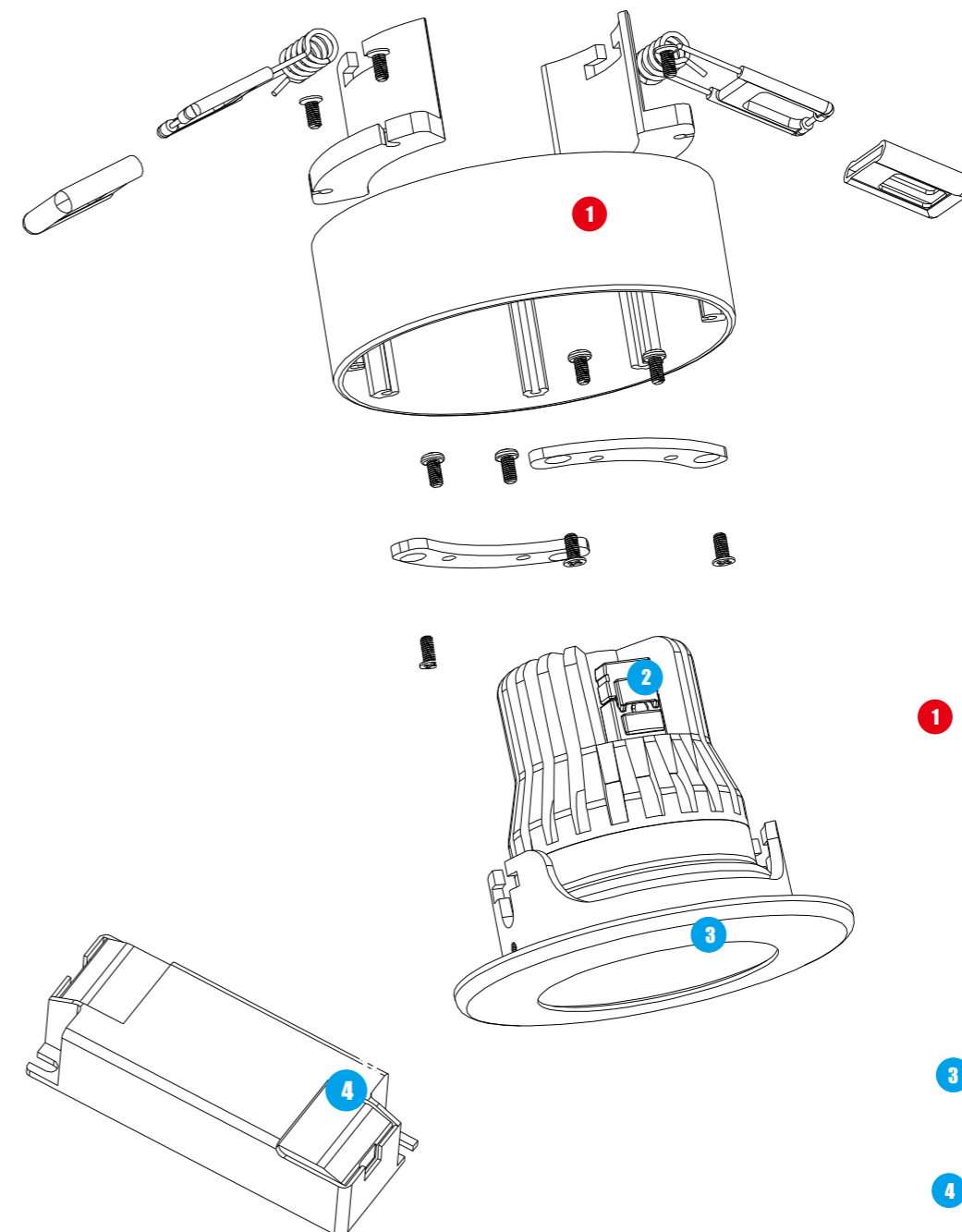
## Installation process

1. Ceiling open
2. Connect driver to the power
3. Hold back spring clips. Push the downlight into position
4. Installation finished

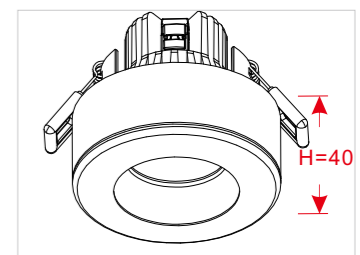


2 DC connector with anti-pull-off design. Not only beautiful and practical but also meet all certificates standards.

1. Press the rocker switch with one thumb.  
2. Pull the DC cable upward with fingers while pushing the radiator downward with another thumb.  
3. Separated.



1 The standard height of SHP series is 40mm. Customized height is available.



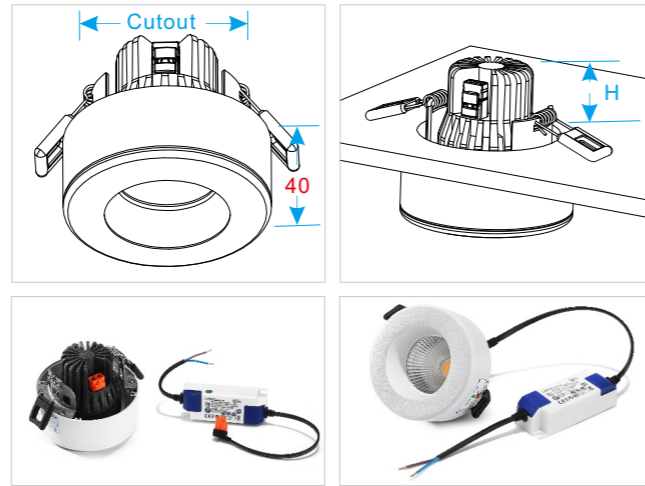
3 The max power of SHP series is 30W. All photoelectric parameters are same as DH series's.

4 Flicker free driver with 5 years warranty and almost all certificates. Other famous drivers are available.





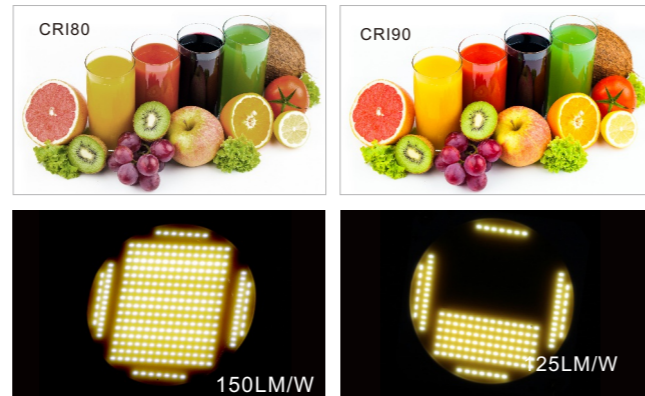
The standard height of SHP series is 40mm. Customized height is available.



**Application:**

Widely used as indoor main illumination lighting in household, hotel, restaurant, shopping mall, bar, KTV, cabinet, office meeting room, library, museum, exhibition, etc.

Self-design BESUN COB LED with Epistar chip, ceramic PCB and pure gold thread, which has features of high light efficiency, high CRI, high stability, low light decay, low SDCM, etc. The most representative feature of BESUN COB LED: 150lm/W under CRI>90, R9>50 & 3000K, and the highest CRI can be CRI>97. Also, even if half of the chips don't work, just less than 20% reduction in luminous efficiency.



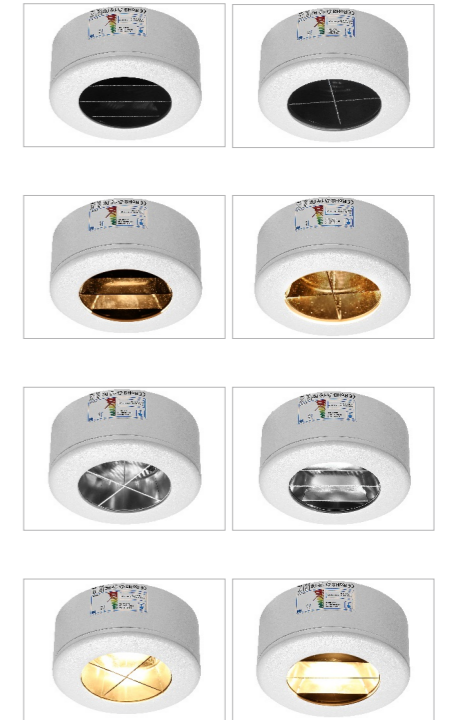
Support Triac dim, 1-10V dim, Dali dim, DMX dim, 2.4G dim, Perfectly compatible with almost all famous light source & driver: Philips, CREE, CITIZEN, Tridonic, Osram, Lifud, Eaglerise, Meanwell, etc.



Power 7-12W can be CCT adjustable from 2000K to 2800K by Triac dimmable. Lower CCT, low power & lumen will be lower relatively. And 2800K will be with highest luminous flux output.

Power 20-30W can be CCT adjustable from 2700K to 5700K, but power keep the same, and the brightness depends on current CCT only.

SXP and SSP series downlight are designed for some special place which people may need to look up directly. Such as clothes store, elevator, over the dining-table, etc.



**Remark: " H " means mounting height**

Cutting size	75-85mm	95-110mm	125-140mm	145-170mm
	SHP0775S Power:7W Size:96*H48	SHP1295S Power:12W Size:120*H60	SHP20125S Power:20W Size:150*H80	SHP30145S Power:30W Size:180*H97

CCT: 2700K,3000K,4000K,5000K,6000K;  
CRI: CRI>90,R9>50/CRI>97,R9>95

**SHP,UGR<17**  
**SXP,SSP,UGR<12**

Item No.	SHP0775S S(X,S)0775S	SHP1295S S(X,S)1295S	SHP20125S S(X,S)20125S	SHP30145S S(X,S)30145S
Power (W)	7W total 8W	12W total 13W	20W total 22W	30W total 32W
Size (mm)	96*H48 75-85 (hole)	120*H60 95-110 (hole)	150*H80 125-140 (hole)	180*H97 145-170 (hole)
Illumination	500-800lm	1000-1400lm	1500-2400lm	2700-3500lm
Beam angle	25° 38° 50° 90°	20° 38° 50° 90°	15° 38° 55° 90°	20° 38° 55° 95°
N. W.	0.5kg	0.7kg	1.1kg	1.7kg
Packing	44*34*41CM 36pcs	53*27*57CM 32pcs	49*49*35CM 18pcs	39*39*51CM 12pcs
IP	IP33			
Input voltage	AC100-277V or AC200-240V			